

RUDDER GUST LOCK - MAINTENANCE PRACTICES**1. General**

- A. This section covers description and operation, removal/installation and rigging procedures for the rudder gust lock installed on Airplanes 20800237 and On and 208B0382 and On.

2. Description and Operation

- A. A rudder gust lock may be installed on the airplane to lock the rudder in neutral position, thus preventing damage to the system by buffeting winds when the airplane is parked. The gust lock is engaged by a handle on the left side of the tailcone stinger.
- B. The rudder gust lock may be engaged with the elevator in the full down position, then placing the gust lock handle, on the left side of the stinger, in the lock position. The gust lock is disengaged automatically any time the elevator is moved up to neutral position.

3. Rudder Gust Lock Removal/Installation

- A. Remove Rudder Gust Lock (Refer to Figure 201).

- (1) Remove screw (10) from handle (11), and remove handle.
- (2) Remove screws (12), and cover plate (8).
- (3) Remove screws securing stinger, retain screws for reinstallation of stinger.
- (4) Remove nuts (7), washers (6), washers (4), bolts (3), bolts (1), washers (2), and remove lock assembly (5).
- (5) Remove pins (21) and remove hinge (22).
- (6) Remove nut (20), washer (19), and rod-release (18) from pin-eye (15).
- (7) Remove cotter pin (27), nut (26), washers (24), pin-eye (15), washers (14), and bolt (13).
- (8) Remove cotter pin (33), nut (34), washers (35), rod end (37) and bolt (40).
- (9) Remove cotter pin (47), nut (48), washer (49), bolt (52), and washer (51) and remove tube assembly (46).
- (10) Remove cotter pin (32), nut (31), washer (30), wedges (29), bushing (28), washer (25), bell crank (36), bushing (23), bell crank (39), washer (41), bushing (42), wedges (43), washer (44), and bolt (45).

- B. Install Rudder Gust Lock (Refer to Figure 201).

- (1) Position tube assembly (46) on push rod (50) and install washer (51), bolt (52), washer (49), nut (48), and new cotter pin (47).
- (2) Install bell cranks (36) and (39) using bolt (45), washer (44), wedges (43), bushing (42), washer (41), bushing (23), washer (25), bushing (28), wedges (29), washer (30), nut (31), and new cotter pin (32).
- (3) Connect rod end (37) between bell cranks (36) and (39) using bolt (40), washers (38), washers (35), nut (34), and new cotter pin (33).
- (4) Connect pin-eye (15) between bell cranks (36) and (39) using bolt (13), washers (14), washers (24), nut (26), and new cotter pin (27).
- (5) Position rod-release (18) on pin-eye (15) and install hinge (22) using pins (21).
- (6) Install washer (19) and nut (20) on pin-eye (15). Do not tighten at this time.
- (7) Install lock assembly (5) using bolts (3), washers (4), washers (6), nuts (7), washers (2), and bolts (1).
- (8) Temporarily install handle (11) on lock assembly (5) using screw (10), and rig gustlock.

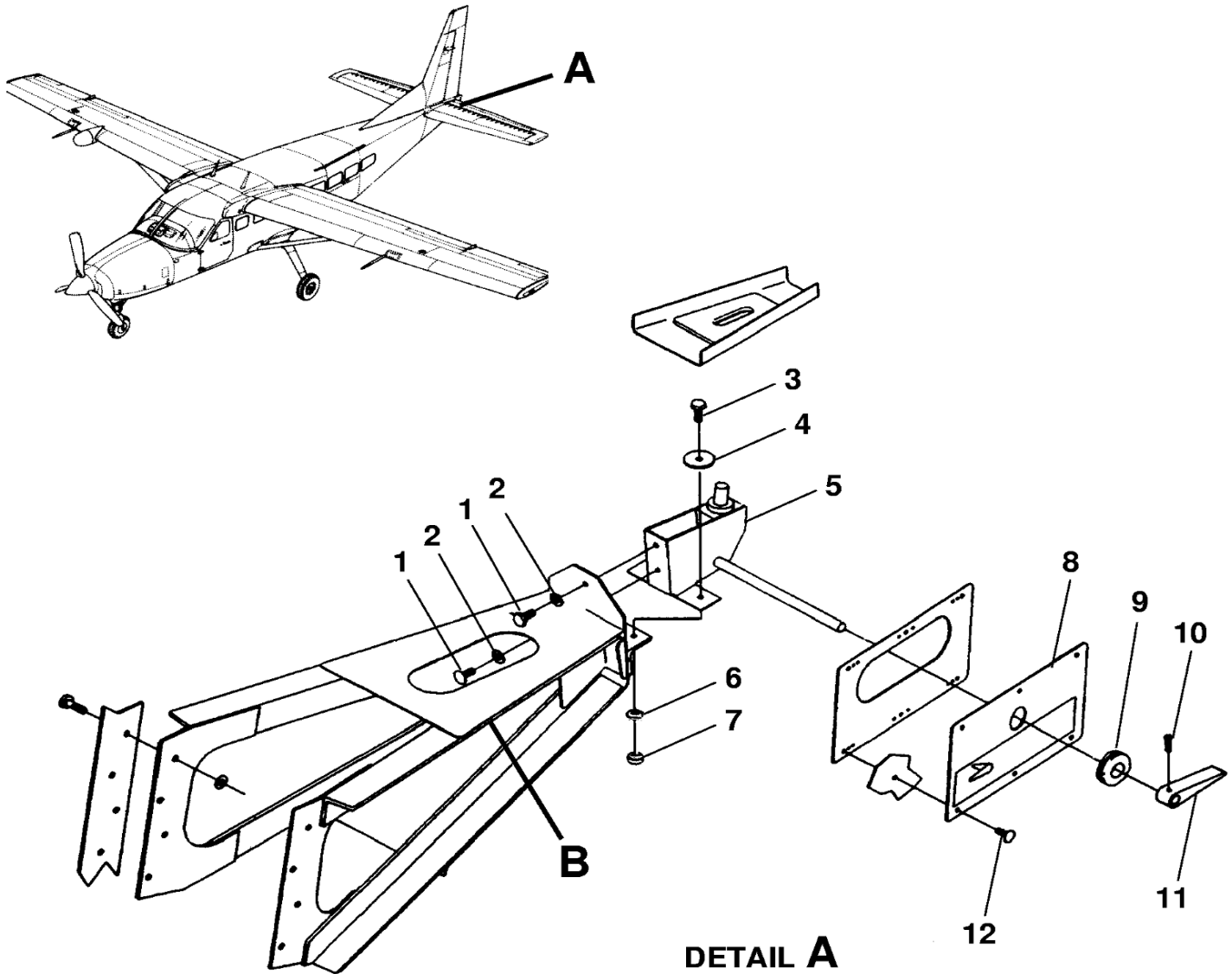
4. Rudder Gust Lock Rigging

- A. Rigging Procedures.

- (1) Remove screw (10), handle (11), screws (12), and plate (8).
- (2) Remove screws securing stinger and remove stinger.
- (3) With lock assembly (5) in the lock position and elevators in the down position, use nuts (16) and (20) to adjust rod-release so that it trips the lock assembly (5) when elevators are raised to the neutral position.
- (4) Tighten nuts (16) and (20).
- (5) Install stinger and plate (8) using screws (12).
- (6) Install handle (11) using screw (10).

Figure 201 : Sheet 1 : Rudder Gust Lock Installation

A22601



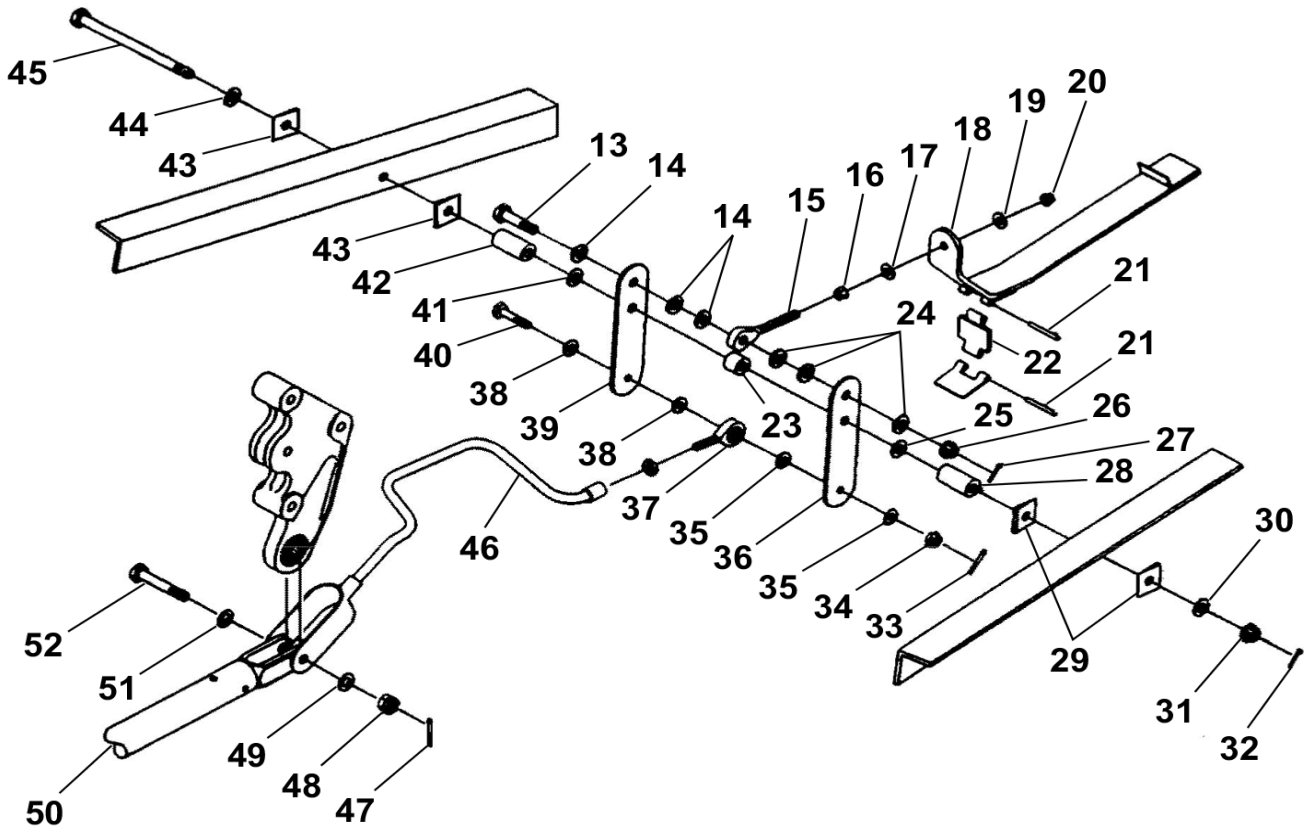
- | | |
|------------------|------------|
| 1. BOLT | 7. NUT |
| 2. WASHER | 8. PLATE |
| 3. BOLT | 9. GROMMET |
| 4. WASHER | 10. SCREW |
| 5. LOCK ASSEMBLY | 11. HANDLE |
| 6. WASHER | 12. SCREW |

AIRPLANES 20800238 AND ON
 AND 208B0382 AND ON

2614C1186

Figure 201 : Sheet 2 : Rudder Gust Lock Installation

A22602



DETAIL B

- | | | |
|-----------------|----------------|-------------------|
| 13. BOLT | 26. NUT | 39. BELL CRANK |
| 14. WASHER | 27. COTTER PIN | 40. BOLT |
| 15. EYE PIN | 28. BUSHING | 41. WASHER |
| 16. NUT | 29. WEDGE | 42. BUSHING |
| 17. WASHER | 30. WASHER | 43. WEDGE |
| 18. RELEASE ROD | 31. NUT | 44. WASHER |
| 19. WASHER | 32. COTTER PIN | 45. BOLT |
| 20. NUT | 33. COTTER PIN | 46. TUBE ASSEMBLY |
| 21. PIN | 34. NUT | 47. COTTER PIN |
| 22. HINGE | 35. WASHER | 48. NUT |
| 23. BUSHING | 36. BELL CRANK | 49. WASHER |
| 24. WASHER | 37. ROD END | 50. PUSH ROD |
| 25. WASHER | 38. WASHER | 51. WASHER |
| | | 52. BOLT |

AIRPLANES 20800238 AND ON
AND 208B0382 AND ON

2614R1186